

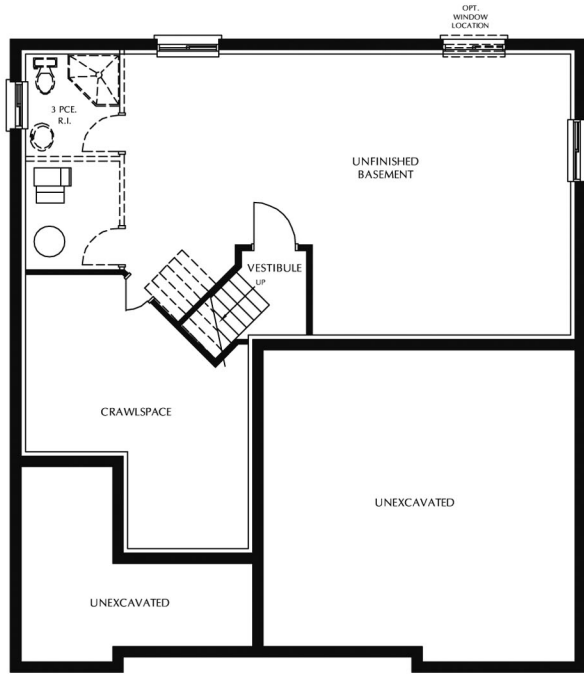


Optional 4 Bedroom Plan - 2136 Sq. ft.

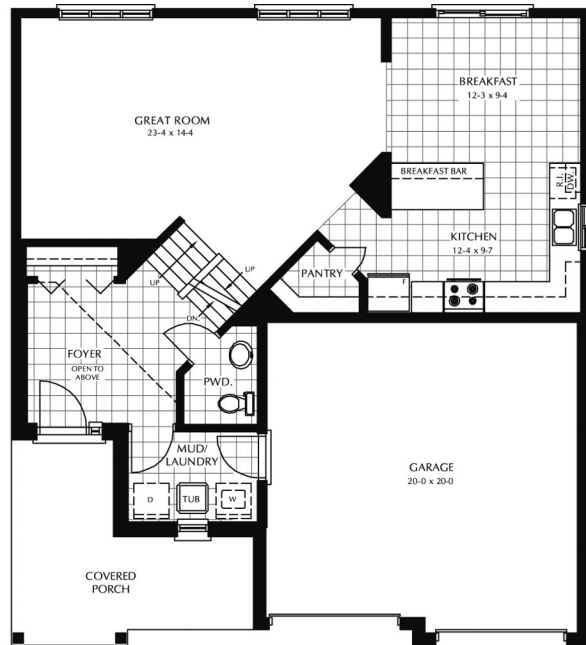


# The NIAGARA-45

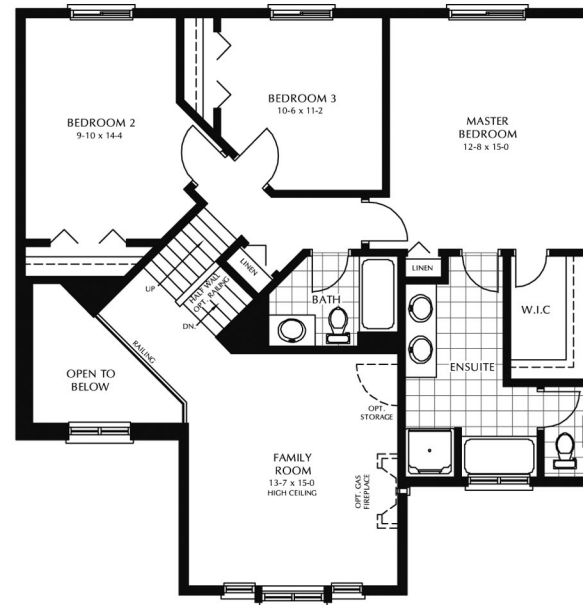
2064 Sq.ft.



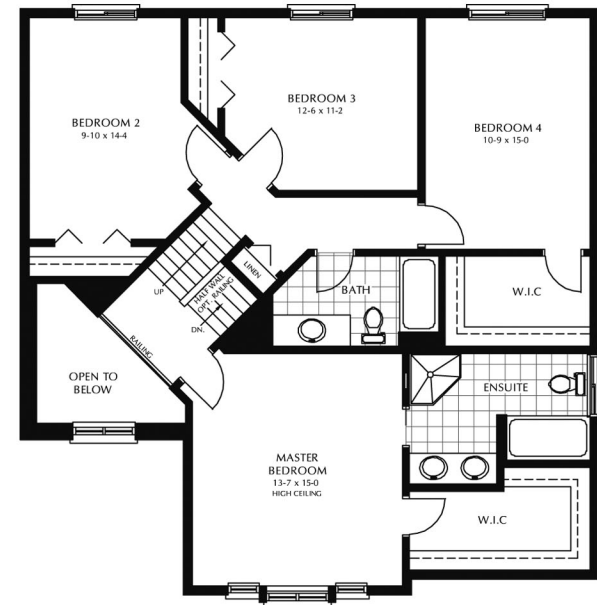
BASEMENT FLOOR PLAN



MAIN FLOOR PLAN



SECOND FLOOR PLAN



SECOND FLOOR PLAN  
4 BEDROOM OPTION



# The NIAGARA-45

2064 Sq.ft. Optional 4 Bedroom Plan - 2136 Sq.ft.

Specifications and plans are subject to change without notice. E. & O.E.. Actual usable floor space may vary from stated floor area. Illustrations depicted are an artists concept of the completed building only. Illustrations may show optional features which may not be included in the base price. Ask your sales representative for more information.