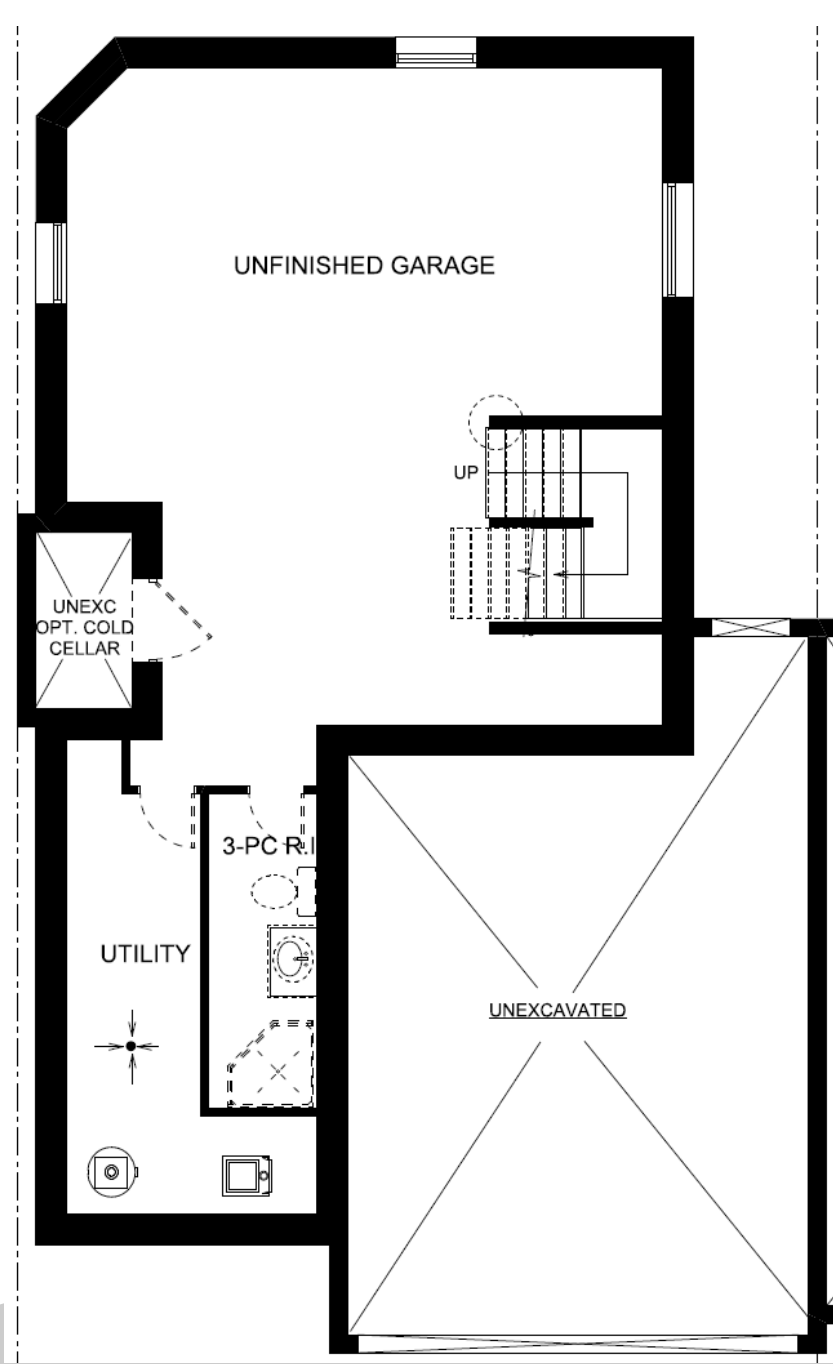


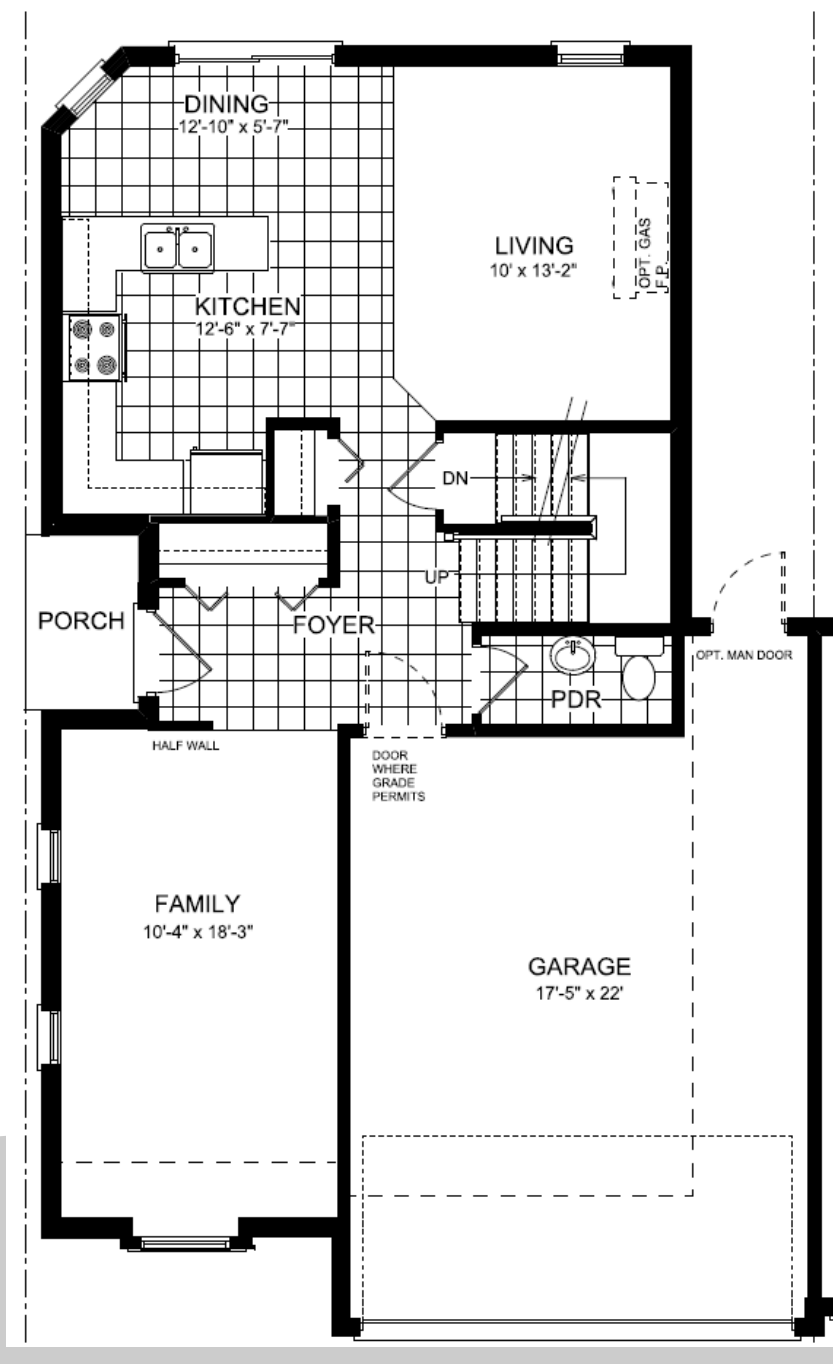


THE **RIVERWOOD** Attached Home
1,780 Sq. Ft.

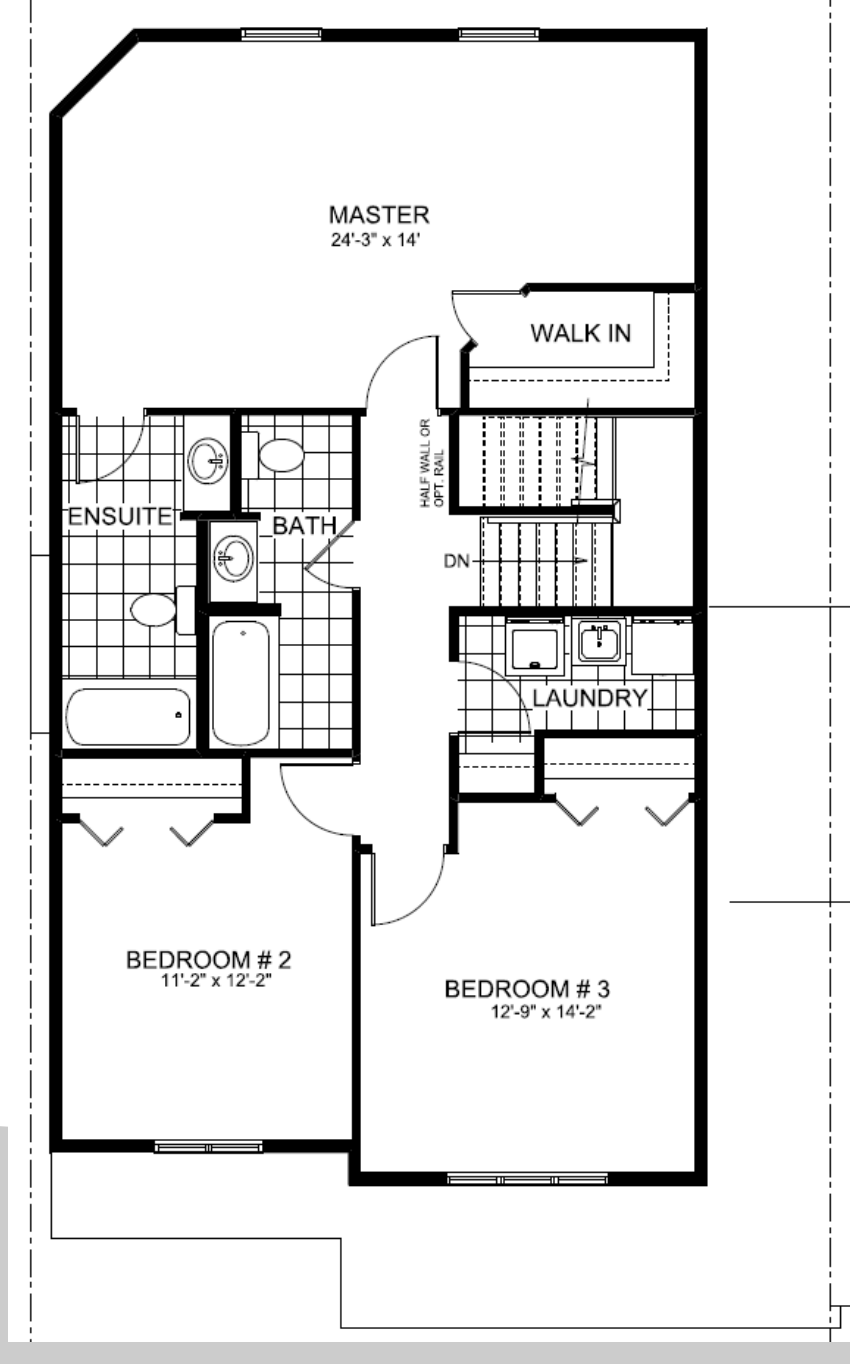
[www.CHURCHILL -HOMES.com](http://www.CHURCHILL-HOMES.com)



BASEMENT FLOOR



MAIN FLOOR



SECOND FLOOR



THE **RIVERWOOD** Attached Home

1,780 Sq. Ft.

Builder reserves right to alter or reverse plans. Specifications and plans are subject to change without notice. E. & O. Actual usable floor space may vary from stated floor area. Illustrations depicted are an artists concept of the completed building only. All sizes or dimensions on drawings are approximate. Bulkheads may be required at discretion. Ceiling heights vary amongst plans. Stair configuration will change with any change to ceiling heights. Mechanical equipment and locations are not exact and may change as per site requirements and conditions. Drawings are not to be scaled.