



**Nature's Watch in Waterloo**

**Tanis Goodwin**

**SALES REPRESENTATIVE**

Direct 519.497.5140

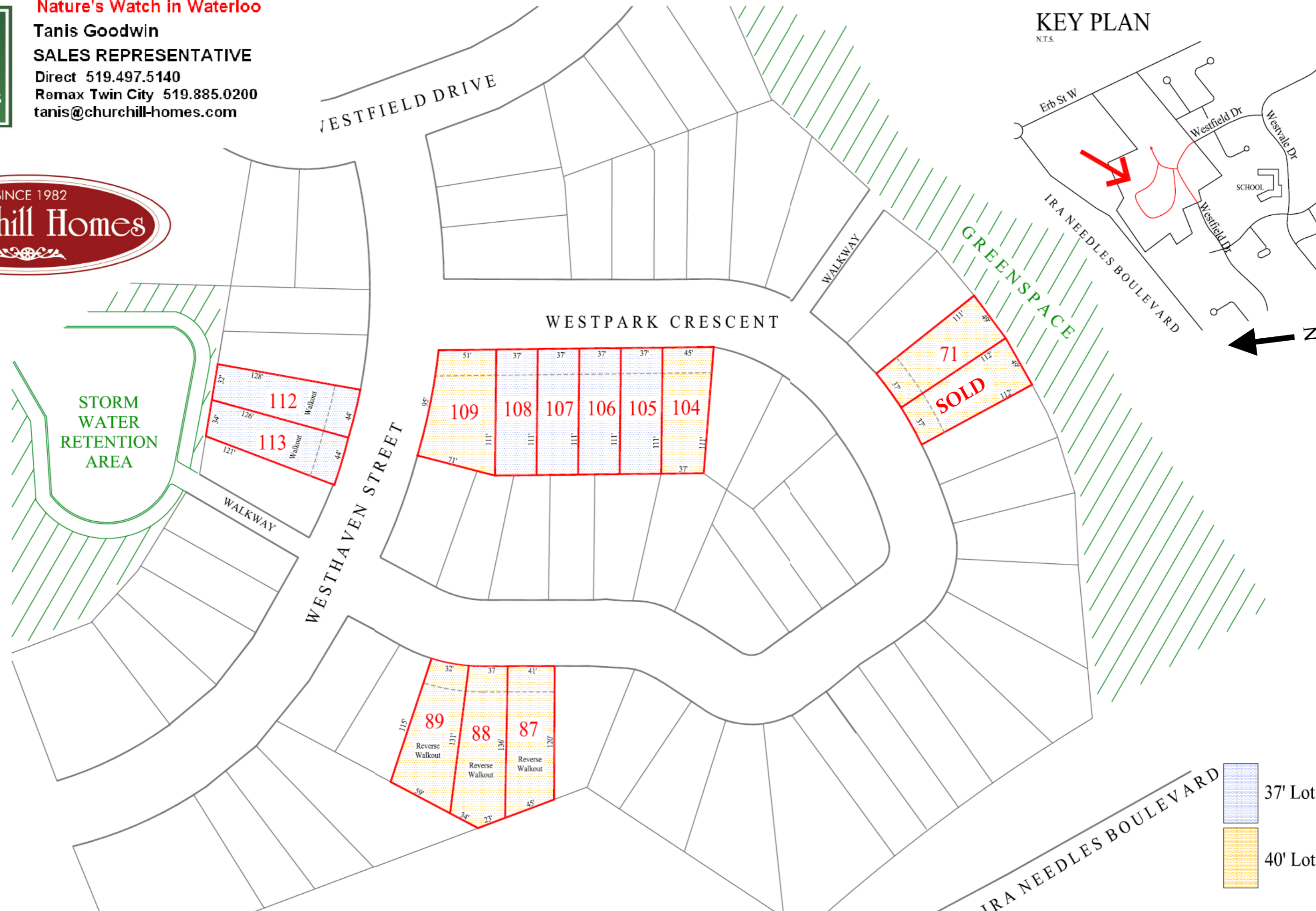
Remax Twin City 519.885.0200

tanis@churchill-homes.com



**KEY PLAN**

N.T.S.



STORM WATER RETENTION AREA

WESTPARK CRESCENT

WESTHAVEN STREET

GREENSPACE

IRA NEEDLES BOULEVARD

37' Lot

40' Lot

